

Notice to Mariners

Vessels and General Safety Advice

Scottish Hydro Electric Power Distribution (SHEPD) ED2 Cable Installation Works: Coll-Tiree

Date of Issue: 13th May 2026

Please be advised that Briggs Marine Contractors (on behalf of SHEPD) will be conducting ROV surveys and installing additional subsea cable protection between Coll and Tiree. Please refer to Figure 1 that shows the location of the planned works. Please also refer to Table 2 overleaf that lists the coordinates for the area.

The cable protection installation will take place with the CBS Hurricane and will consist of a ROV survey and Diving operations.

Please refer to Table 1 that lists scope of work, estimated date range and the relevant vessels that will be utilised. As work progresses, further updates will be provided.

	Estimated date range	Relevant vessels
ROV route survey	14 th – 17 th May 2026	CBS Hurricane
Diving operations	18 th May – 20 th June 2026	CBS Hurricane

Table 1 - Scope of work, estimated date range and vessels

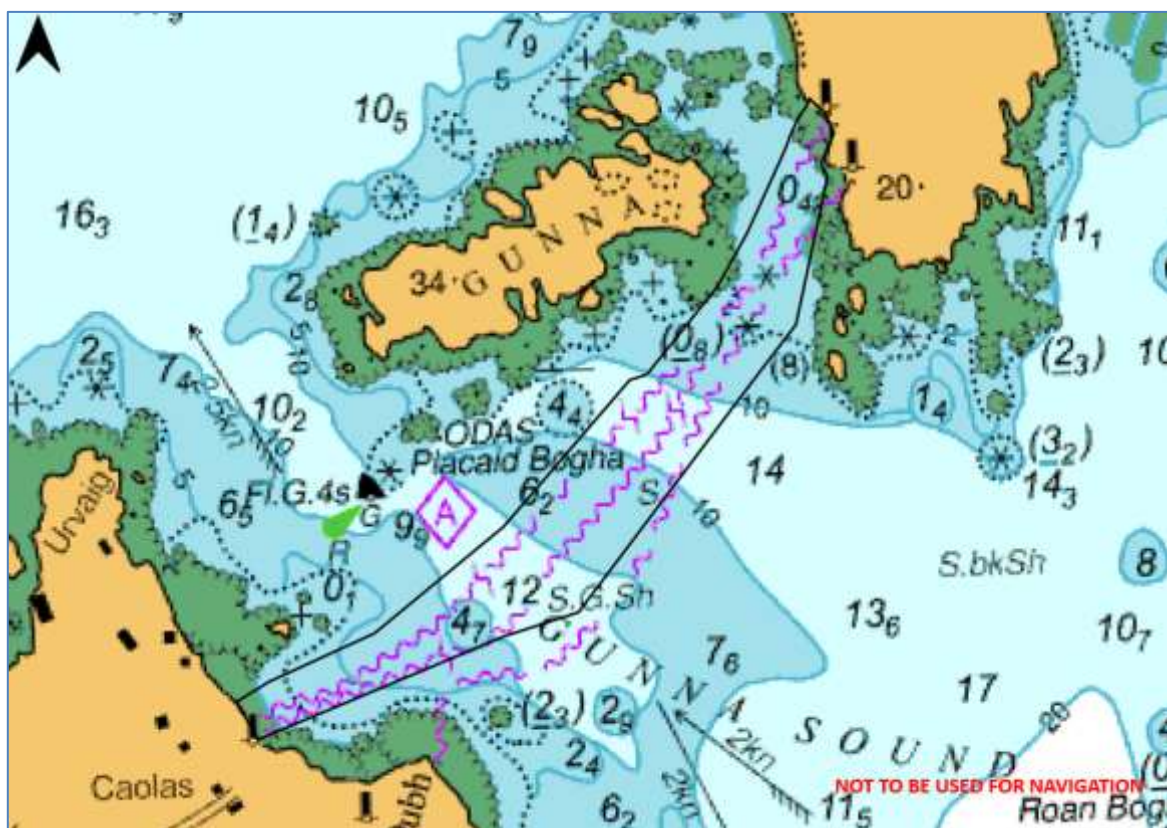


Figure 1 - Admiralty chart showing working corridor

Latitude (DDM) WGS84	Longitude (DDM) WGS84
56° 33.726 'N	06° 42.380 'W
56° 33.511 'N	06° 42.713 'W
56° 33.496 'N	06° 42.791 'W
56° 32.880 'N	06° 43.997 'W
56° 32.767 'N	06° 44.492 'W
56° 32.720 'N	06° 44.640 'W
56° 33.136 'N	06° 43.393 'W
56° 34.096 'N	06° 42.025 'W
56° 34.079 'N	06° 42.034 'W
56° 34.038 'N	06° 42.069 'W
56° 33.857 'N	06° 42.233 'W
56° 33.626 'N	06° 42.025 'W
56° 33.996 'N	06° 41.854 'W
56° 34.026 'N	06° 41.886 'W
56° 34.149 'N	06° 41.974 'W
56° 34.172 'N	06° 41.947 'W
56° 32.860 'N	06° 43.406 'W
56° 32.913 'N	06° 43.062 'W
56° 33.474 'N	06° 42.245 'W
56° 32.621 'N	06° 44.546 'W
56° 34.191 'N	06° 41.927 'W
56° 34.153 'N	06° 41.853 'W
56° 34.102 'N	06° 41.820 'W
56° 33.726 'N	06° 42.380 'W

Table 2 – Installation corridor boundary

 <p>The image shows a yellow and blue inflatable boat with a cabin, floating on the water. A sign on the boat reads 'CBS COMMERCIAL BOAT SERVICES'. In the background, there are residential buildings and a stone wall.</p>	<p>Survey and Dive Support Vessel</p> <p>CBS Hurricane</p> <ul style="list-style-type: none"> - 11.2 m LOA - 3.9 m beam - 0.5 m Draft <p>MMSI: 235009381 Callsign: VQMP5</p>
---	---



Figure 1 - Vessel Specification

Work Description

During operations the CBS Hurricane vessel will be restricted in their ability to manoeuvre due to ROV and Diving operations taking place. Whilst operations will seek to minimise disruption on the width of the main navigation channel, some disruption may be unavoidable during operations within the working corridor.

Operations will be conducted over 12 hours and are weather/tide dependent.

Should any vessel wish to come within 500m of the vessels, then direct communication with the Master / Operator is required. Vessels will display the appropriate lights/day shapes for their operations.

Contact Details

The contact details are given in the tables below:

Site contact:	
Briggs Marine Contractors Project Manager	Suzanne Grimes
Email	sgrimes@briggsmarine.com
Tel	07391391564

Fisheries Liaison Officers

Fisheries liaison will be co-ordinated by Brown and May Marine (BMM). For any commercial fishery queries please contact the Company Fisheries Liaison Officer (CFLO's) Alex Winrow-Giffin on 07760 160039, alex@brownmay.com or Meg Kalafat on 07702 710176, meg.kalafat@brownmay.com The local Fishing Industries Representative (FIR) George White (07761 87396), georgewhite0@gmail.com will also be in place to liaise with the vessels and fishing operations in the area.

Further Details

Further enquiries should be addressed to the following people:

Name	Contact Number	Email
Auben Lavery – SSEN Project Manager	07983 513 839	Auben.Lavery@sse.com

Legal Notice

Please be advised that this Notice to Mariners should be treated as official notice of the nature, duration and location of the works which are scheduled to take place. During the period of this notice, we request that you plan your activities around our short-term, temporary activities.

Any failure to remove equipment where this has been requested, or entry into the identified location in a manner that would constitute a hazard may be a breach of your duties of safe seamanship as described in the Convention on International Regulations for Preventing Collisions at Sea 1972 and/or the Merchant Shipping Act 1995, and may result in removal of the relevant equipment. Failure to remove equipment, where this has been requested, or entry into the identified location in a manner that would constitute a hazard may constitute a breach of duty of care at common law, and a failure to protect submarine cables for successful seabed user co-existence under Scotland's National Marine Plan.

SHEPD shall found on this notice in the event of any damage, loss or disruption arising from failure to heed the information herein.

Distribution List

Any stakeholders identified within the Argyll Fishing Liaison Management Action Plan (FLMAP), will be included on the distribution list for this NtM.